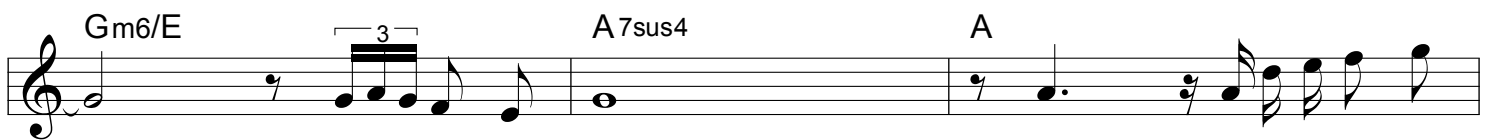
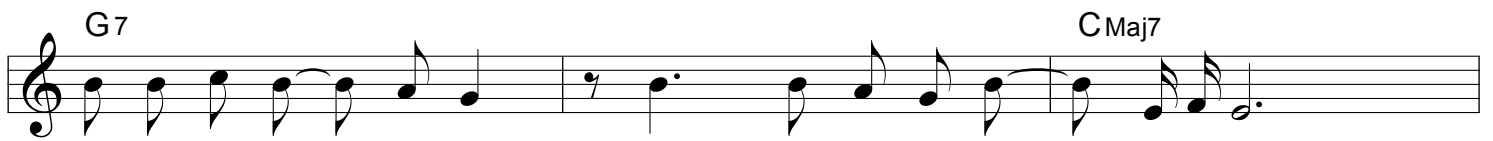


BARDZO POWAŻNA ROZMOWA

Muzyka: SEWERYN KRAJEWSKI

♩ = 88



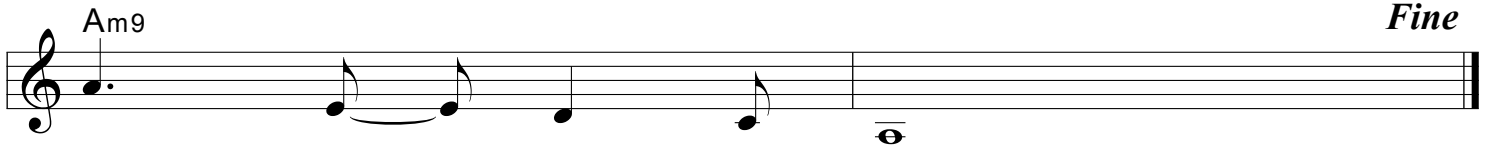
Bardzo poważna rozmowa

E Am9 Em



A musical staff in treble clef containing three measures. The first measure has a chord 'E' above it and contains a quarter note G4, an eighth note A4, a quarter rest, an eighth note B4, and a quarter note C5. The second measure has a chord 'Am9' above it and contains a half note G4 tied to the first measure, a quarter note A4, and a quarter note B4. The third measure has a chord 'Em' above it and contains a whole note G4.

Am9 *Fine*



A musical staff in treble clef containing two measures. The first measure has a chord 'Am9' above it and contains a dotted quarter note G4 and an eighth note A4. The second measure contains a quarter note B4, a quarter note C5, and a whole note G4. The staff ends with a double bar line and the word 'Fine' in italics.